

# HOLY WISDOM MONASTERY

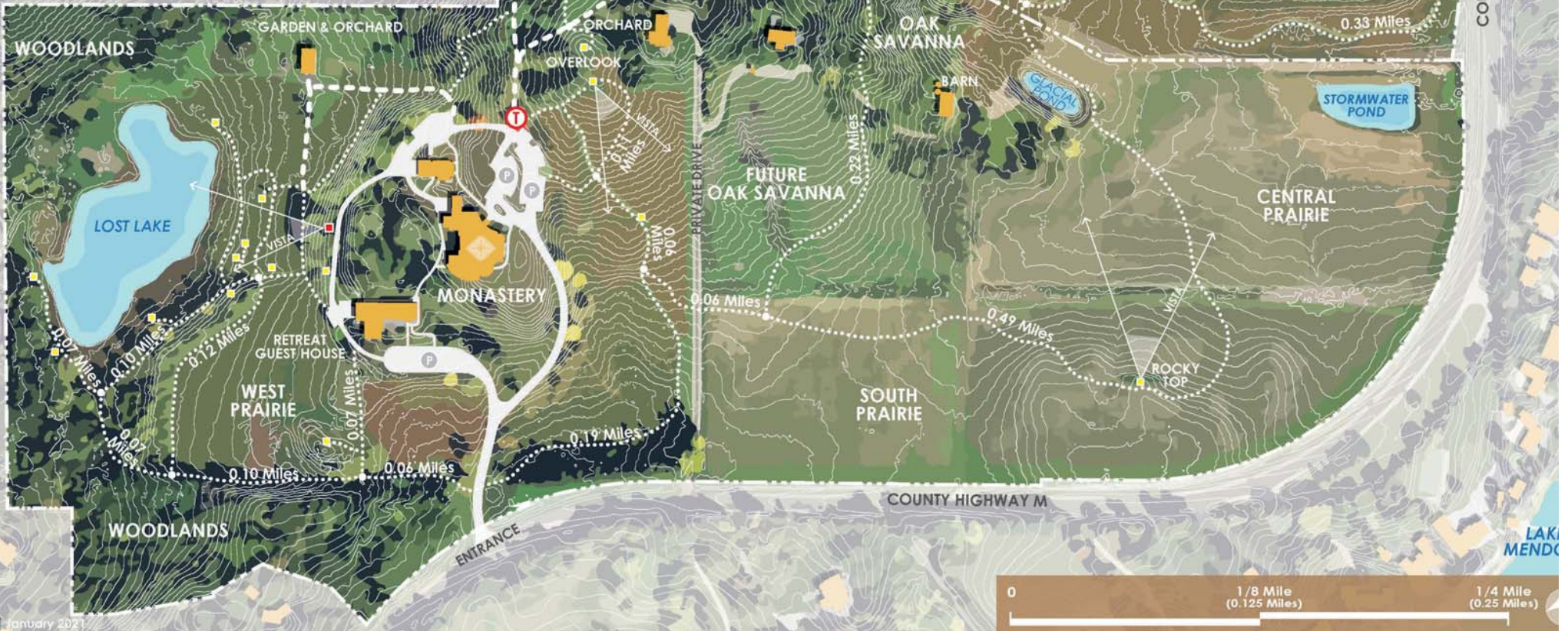
*Tending a Sacred Space*

-  TRAILHEAD & KIOSK
-  WALKING TRAIL (with trail segment distance)
-  SERVICE ROAD & TRAIL
-  BUILDINGS
-  PARKING LOT
-  OBSERVATION DECK
-  BENCH SEATING
-  WATER BODY
-  PROPERTY BOUNDARY

BISHOPS BAY DEVELOPMENT

GOVERNOR NELSON STATE PARK

COUNTY HIGHWAY W  
ACCESS POINT  
COUNTY HIGHWAY M







## *Caring for the earth*

In 1953, the Benedictine sisters set down roots on a hill overlooking Lake Mendota and the skyline of Madison, Wisconsin. The original 40 acres consisted of farmland cleared in the early 1900s. Today, Holy Wisdom Monastery manages 190 acres with a 10,000-year-old glacial lake, one of the 'greenest' LEED-certified buildings in the country, wooded nature trails, restored prairie, gardens, orchards and the beginning of an oak savanna.

In July 2017 the sisters received the international Assisi Award from the Society for Conservation Biology for the environmental efforts spanning more than 60 years at Holy Wisdom.

Caring for the earth is part of the mission, rooted in Benedictine values of stability and respect for all of creation. The sisters, in partnership with coworkers, hundreds of volunteers, agencies and organizations, do their part to protect nearby Lake Mendota and preserve an oasis of quiet beauty where **all are welcome**.

## *Nature trails*

Guests and the public are welcome to explore the nature trails at Holy Wisdom Monastery and the North Mendota Wildlife Area, which is adjacent to Holy Wisdom and maintained by the monastery. Restored tall grass native prairie dominates the landscape, and vistas overlooking Lake Mendota and the city of Madison are breathtaking. Learn more about the environmental efforts at [HolyWisdomMonastery.org](http://HolyWisdomMonastery.org).

Please help us sustain quiet and contemplative grounds during your visit by following these rules:

- No dogs or other pets
- Stay on designated trails
- Pick up litter
- No camping, fishing, biking, driving on trails
- No fires, unless approved in advance
- Do not pick or remove any plants

## *Help us continue the work*

Become a **Friend of Wisdom Prairie** today. Your membership helps us continue to restore and maintain the land. Many Friends also volunteer and attend environmental education events. To learn more or to join, contact Amy Alstad, director of land management at 608-836-1631, x123 or [friends@holywisdommonastery.org](mailto:friends@holywisdommonastery.org).

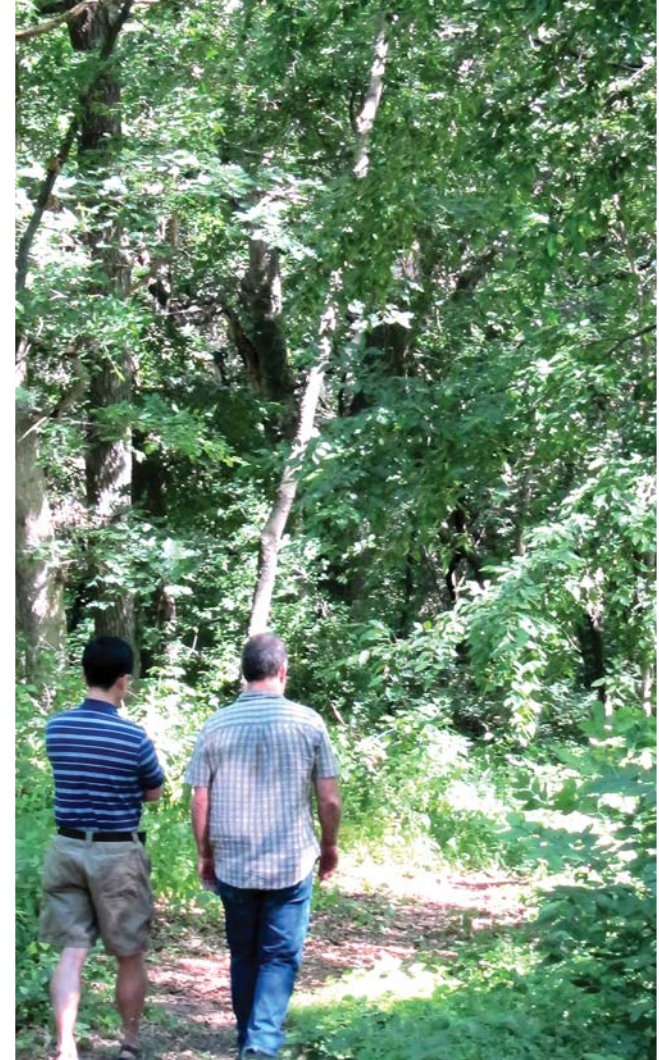


Holy Wisdom Monastery  
4200 County Road M • Middleton, WI 53562  
608-836-1631, x123

[HolyWisdomMonastery.org](http://HolyWisdomMonastery.org)

5/22

## *Enjoy the nature trails at Holy Wisdom Monastery*



*"All guests are to be received with  
sincere hospitality, 'with the courtesy  
of love'" -Rule of Benedict 53:1*